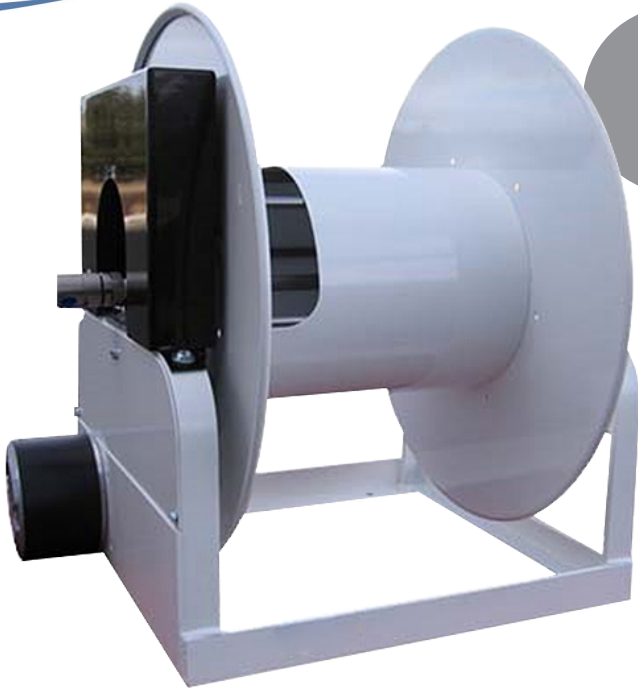


# MOTOR REWIND REELS



## 3/8" TO 3/4" HOSE POWERED REWIND

### Standard Equipment

- 3,000 psi
- Ball bearings, both sides
- Heavy-duty construction
- Pin-lock brake
- Powder coat finish

**American Reels® motor driven rewind reels are designed to provide easy and efficient storage for hoses, cables, and cords.** These reels are powered by a motor, which allows for automatic rewinding of the hose, eliminating the need for manual labor and increasing productivity.

Motor rewind reels come in a variety of sizes and configurations, and are commonly used in industrial and commercial settings where hoses and cables are frequently used. These reels are made from high-quality materials, and are built to withstand the demands of heavy use.

The motor rewind feature allows the hose to be retracted smoothly and quickly without the need for manual intervention, and are ideal for use in a range of settings, including construction sites, manufacturing facilities, and warehouses.

If you are looking for a safe, reliable, and efficient way to store your hoses and cables, a motor rewind reel is an excellent choice. With our durable construction and motorized rewinding feature, these reels are an essential tool for anyone who needs to store and use hoses and cables on a regular basis.

**RUGGED BY DESIGN**

775.246.1000 | [WWW.AMERICANREELS.COM](http://WWW.AMERICANREELS.COM)

# MOTOR REWIND REELS

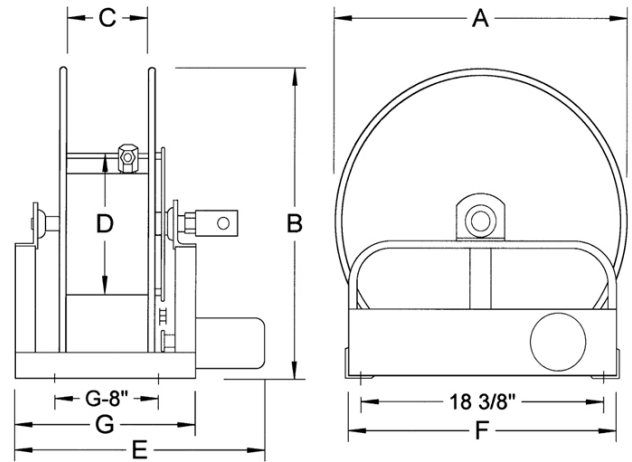
## 3/8" TO 3/4" HOSE

When ordering - Please supply the following information.

- 1 - Model number of reel
- 2 - Type of rim
- 3 - Type of motor
- 4 - Product to be handled
- 5 - Right or left hand inlet

### Add Prefix

- E - for Electric motor  
A - for Air motor  
H - for Hydraulic motor



Model	Hose		Dimensions in Inches						
	I.D.	Length	A	B	C	D	E	F	G
1108-20-03	3/8"	100'	20	21 1/2	8	11	18 1/2	20	14
1106-22-03	3/8"	100'	22	23 1/2	6	11	16 1/2	20	12
1110-20-03	3/8"	200'	20	21 1/2	10	11	20 1/2	20	16
1110-22-03	3/8"	200'	22	23 1/2	10	11	20 1/2	20	16
1115-20-03	3/8"	300'	20	21 1/2	15	11	25 1/2	20	21
1110-25-03	3/8"	300'	25	26 1/2	10	11	20 1/2	20	16
1115-25-03	3/8"	400'	25	26 1/2	15	11	25 1/2	20	21
1110-20-05	1/2"	100'	20	21 1/2	10	11	20 1/2	20	16
1108-22-05	1/2"	100'	22	23 1/2	8	11	18 1/2	20	14
1115-20-05	1/2"	200'	20	21 1/2	15	11	25 1/2	20	21
1110-25-05	1/2"	200'	25	26 1/2	10	11	20 1/2	20	16
1120-22-05	1/2"	300'	22	23 1/2	20	11	30 1/2	20	26
1112-25-05	1/2"	300'	25	26 1/2	12	11	22 1/2	20	18
1120-25-05	1/2"	400'	25	26 1/2	20	11	30 1/2	20	26
1120-20-07	3/4"	100'	20	21 1/2	20	11	30 1/2	20	26
1112-22-07	3/4"	100'	22	23 1/2	12	11	22 1/2	20	18
1125-22-07	3/4"	200'	22	23 1/2	25	11	35 1/2	20	31
1115-25-07	3/4"	200'	25	26 1/2	15	11	25 1/2	20	21
1125-25-07	3/4"	300'	25	26 1/2	25	11	35 1/2	20	31
1120-28-07	3/4"	300'	28	29 1/2	20	11	30 1/2	20	26
1125-28-07	3/4"	400'	28	29 1/2	25	11	35 1/2	20	31

\* For spoke rims add 1" to E & G dimensions.

Specifications are subject to change without notice.



American Reels® is a brand of  
United Equipment Accessories, Inc.

2176 232 Lane • Ames, IA 50014 • 775-246-1000  
www.americanreels.com • amreels@uea-inc.com

Copyright © 2025 United Equipment Accessories, Inc.  
8/25