

AIRCRAFT FUELING REELS

SPRING OPERATED



3/4" TO 2" HOSE
SPRING DRIVEN RETRACTION

Standard Equipment

- 500 psi on 1" through 1 1/2" reels
- Positive lock & unlock ratchet (non-sparking)
- Roller guides
- Ball bearings, both sides

American Reels highly engineered Aircraft Refueling Hose Reel, is designed to provide efficient and safe fuel transfer for aviation applications.

Constructed with premium materials, our hose reel is built to withstand even the most demanding environments, ensuring reliable and long-lasting performance. The reel is powder-coated for extra protection against corrosion, making it suitable for outdoor use.

The spring operated reel comes in a variety of sizes and configurations to accommodate a wide range of conditions, and is a reliable and efficient way to manage hoses and fuel in commercial and industrial settings.

Our Aircraft Refueling Hose Reel is compatible with a wide range of fuel types and can be used for various applications, including aircraft refueling, fuel transfer, and fuel dispensing.

RUGGED BY DESIGN

775.246.1000 | WWW.AMERICANREELS.COM

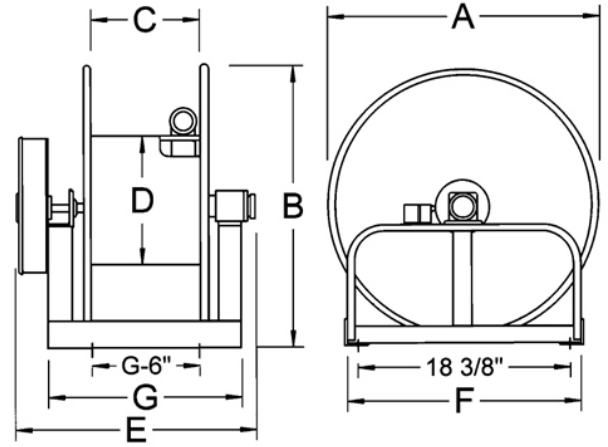
AIRCRAFT FUELING REELS

3/4" TO 2" HOSE

When ordering - Please supply the following information.

- 1 - Model number of reel
- 2 - Type of rim
- 3 - Product to be handled

All reels shipped with right hand inlet and bottom wind unless otherwise specified.



Model	Hose		Dimensions in Inches						
	I.D.	Length	A	B	C	D	E	F	G
SH5D2-07	3/4"	50'	25	26 1/2	5	11	14 1/2	20	11
SH6E2L-07	3/4"	75'	25	26 1/2	6	11	15 1/2	20	12
SH6E2-10	1"	50'	25	26 1/2	6	11	16 1/4	20	12
SH8E2L-10	1"	75'	25	26 1/2	8	11	18 1/4	20	14
SH10E2-12	1 1/4"	50'	25	26 1/2	10	11	20 1/4	20	16
SH10E2L-15	1 1/2"	50'	25	26 1/2	10	11	20 1/4	20	16
SJ10E2-20	2"	40'	28	29 1/2	10	16	19 3/4	20	16 1/2

*For spoke rims add 1" to E & G dimensions.

Specifications are subject to change without notice.



American Reels is a brand of
United Equipment Accessories, Inc.

15 Airpark Vista Blvd • Dayton, NV 89403 • 775-246-1000
www.americanreels.com • sales@americanreels.com