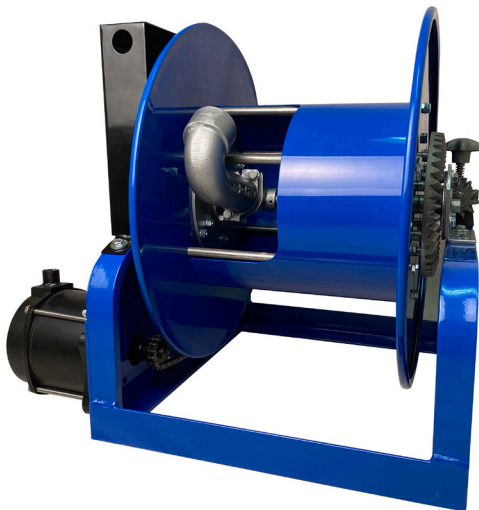


# ELECTRIC MOTOR REELS



## 1" TO 3" HOSE ELECTRIC MOTOR DRIVEN

### Electric Motor Options

12V, 24V, 115VAC, and 230VAC models

### Standard Equipment

500 psi

Extra heavy duty on reels for 3" hose

Aluminum flow path for 3" hose

Powder coat finish

### Optional Equipment

Explosion proof motors

Higher pressure for 1" hose

Auxiliary crank and gear brake

Brass swivel joints

American Reels' electric motor reels are automated hose storage and retrieval systems that utilize an electric motor to power the reel. These reels are commonly used in industrial, commercial, and agricultural settings where efficient hose storage is essential.

There are several options available for electric motors, including 12V, 24V, 115VAC, and 230VAC models. The 12V motors, which come in both explosion proof and regular versions, are available in 1/3hp or 1/2hp capacities. Meanwhile, the 24V motors are only available in explosion proof versions.

These reels can be mounted on walls, floors, or ceilings depending on available space and the application, allowing for easy access and storage. They are designed to improve safety, increase productivity, and reduce the risk of damage to hoses, making them an essential tool for many industries.

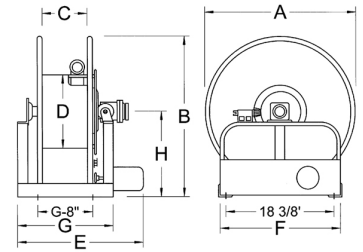
**RUGGED BY DESIGN**

775.246.1000 | [WWW.AMERICANREELS.COM](http://WWW.AMERICANREELS.COM)

# ELECTRIC MOTOR REELS 1" TO 3" HOSE

When ordering - Please supply the following information.

- 1 - Model number of reel
- 2 - Right or left hand inlet
- 3 - Top or bottom wind
- 4 - Straight or elbow inlet
- 5 - Product to be handled



Model	Hose		Dimensions in Inches						
	I.D.	Length	A	B	C	D	E	F	G
E1115-20-10	1"	50'	20	21 1/2	15	11	29	20	22
E1110-22-10	1"	50'	22	23 1/2	10	11	24	20	17
E1108-25-10	1"	50'	25	26 1/2	8	11	22	20	15
E1125-20-10	1"	100'	20	21 1/2	25	11	39	20	32
E1115-22-10	1"	100'	22	23 1/2	15	11	29	20	22
E1112-25-10	1"	100'	25	26 1/2	12	11	26	20	19
E1120-22-10	1"	150'	22	23 1/2	20	11	34	20	27
E1115-25-10	1"	150'	25	26 1/2	15	11	29	20	22
E1110-28-10	1"	150'	28	29 1/2	10	11	24	20	17
E1125-22-10	1"	200'	22	23 1/2	25	11	39	20	32
E1120-25-10	1"	200'	25	26 1/2	20	11	34	20	27
E1115-28-10	1"	200'	28	29 1/2	15	11	29	20	22
E1112-22-12	1 1/4"	50'	22	23 1/2	12	11	26	20	19
E1110-25-12	1 1/4"	50'	25	26 1/2	10	11	24	20	17
E1120-22-12	1 1/4"	100'	22	23 1/2	20	11	34	20	27
E1115-25-12	1 1/4"	100'	25	26 1/2	15	11	29	20	22
E1125-22-12	1 1/4"	150'	22	23 1/2	25	11	39	20	32
E1120-28-12	1 1/4"	150'	28	29 1/2	20	11	34	20	27
E1115-22-15	1 1/2"	50'	22	23 1/2	15	11	29	20	22
E1112-25-15	1 1/2"	50'	25	26 1/2	12	11	26	20	19
E1110-28-15	1 1/2"	50'	28	29 1/2	10	11	24	20	17
E1130-22-15	1 1/2"	100'	22	23 1/2	30	11	44	20	37
E1125-25-15	1 1/2"	100'	25	26 1/2	25	11	39	20	32
E1120-28-15	1 1/2"	100'	28	29 1/2	20	11	34	20	27
E1130-25-15	1 1/2"	150'	25	26 1/2	30	11	44	20	37
E1125-28-15	1 1/2"	150'	28	29 1/2	25	11	39	20	32
E1135-25-15	1 1/2"	200'	25	26 1/2	35	11	49	20	42
E1130-28-15	1 1/2"	200'	28	29 1/2	30	11	44	20	37
E1615-28-20	2"	50'	28	30	15	16	29 1/2	25	22 1/2
E1610-36-20	2"	50'	36	38	10	16	24 1/2	25	17 1/2
E1630-28-20	2"	100'	28	30	30	16	44 1/2	25	37 1/2
E1620-36-20	2"	100'	36	38	20	16	34 1/2	25	27 1/2
E2020-36-30	3"	50'	36	38	20	20	34 1/2	25	27 1/2
E2010-44-30	3"	50'	44	46	10	20	24 1/2	32	17 1/2
E2015-44-30	3"	100'	44	46	15	20	29 1/2	32	22 1/2

\* For solid rims deduct 1" to E & G dimensions.  
Specifications are subject to change without notice.



American Reels is a brand of  
United Equipment Accessories, Inc.

15 Airpark Vista Blvd • Dayton, NV 89403 • 775-246-1000  
www.americanreels.com • sales@americanreels.com

Copyright © 2023 United Equipment Accessories, Inc.